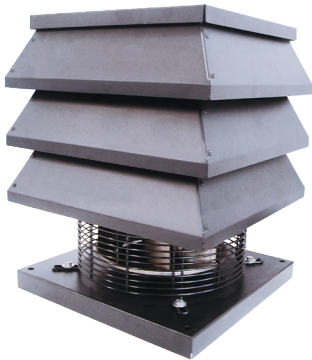




TIRAFUMO

Roof radial extract fans for fireplaces
Outdoor installation



The series is not affected by the ErP Directive 2009/125/CE and further Regulations.

- Ideal for improving the draught of residential fireplaces
- Suitable for chimneys with a section of max 150 x 150 mm (equivalent \varnothing 170 mm) and air temperature of max. 200°C in continuous running
- Easy installation (just Plug & Play)
- Made in steel or copper with highly resistant epoxy finish



PERFORMANCE

MODEL	m ³ /h	l/s	Pa	W	A	dB (A) *
TIRAFUMO	850	236	190	97	0,52	52,5

* Lp(A) measured at 3m in open field 230V-50Hz.

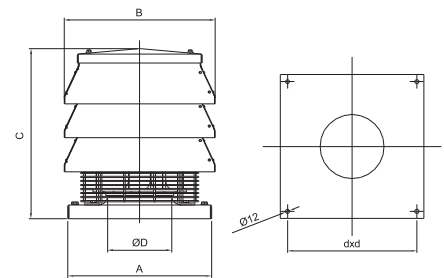
VERSIONS

TIRAFUMO / N - Steel

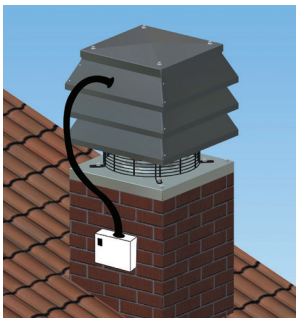
TIRAFUMO / NC - Copper

DIMENSIONS (mm)

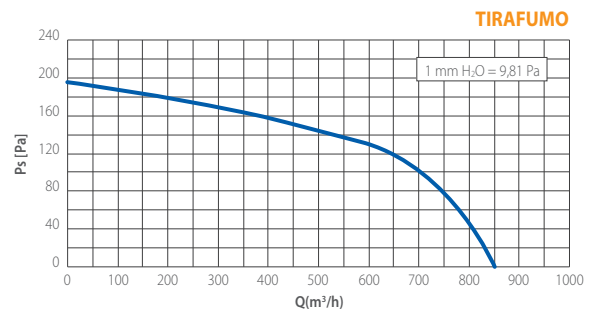
MODEL	A	B	C	\varnothing D	d	Kg.
TIRAFUMO	400	420	540	178	360	22



INSTALLATION



CURVES



SUPPLIED



Counterbase to wall up



Plug-in junction box



Eyebolts



Electronic speed controller **R15**