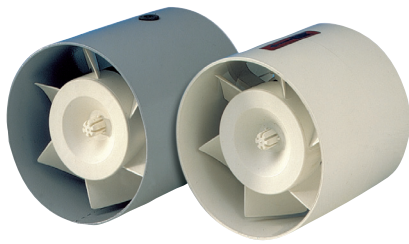




TUBO

Axial in-line duct fans
Wall and ceiling installation



Comply with ErP Directive 2009/125/CE
and EU Regulation 327/2011
Classification: FAN

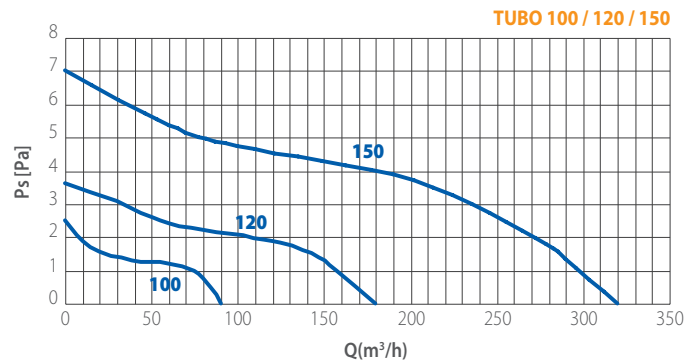
- Suitable for intake / extract ventilation
- Ideal for conveying air between two separate rooms
- Invisible and efficient: no fan into the room
- Metal or Technopolymer versions
- Long Life sleeve bearing motor
- TUBO LAM: Class I protection

PERFORMANCE

MODELS	m ³ /h	l/s	Pa	W	dB (A)*
TUBO 100	90	25	25	11	38
TUBO 120	180	50	35	15	44
TUBO 150	320	89	69	40	51

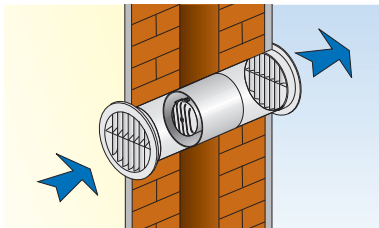
* Lp(A) measured at 3m in open field 230V-50Hz.

CURVES

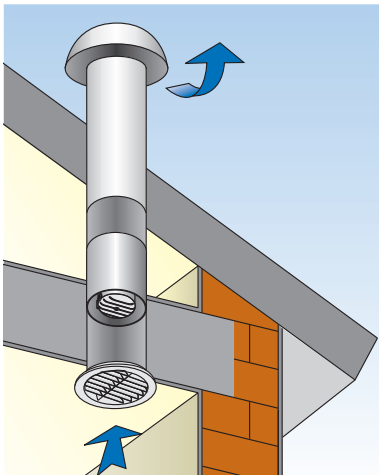


INSTALLATION

WALL



CEILING



VERSIONS



BASE - On/off through light or remote control switch.

TIMER - Integral electronic timer adjustable from 3 to 25 minutes (available on TUBO TP only).

DIMENSIONS (mm)

MODELS	A	ØB	Kg.
TUBO 100	92	97	0,4
TUBO 120	97	119	0,6
TUBO 150	125	151	0,8

